



## PAM Network Installation.

PAM can be run on a Local Area Network or a Wide Area Network (Remote Desktop, Citrix) or a combination of both.

Installation is different for LAN & WAN networks

To complete installation you should have A PAM CD or Setup file – Version 6 or later.

Please contact [support@fairport.com.au](mailto:support@fairport.com.au) if you require any further assistance.

## LAN Installation

### **YOU WILL NEED TO INSTALL PAM FROM ALL WORKSTATIONS**

***If your Server is not shown on your workstation as a “Mapped Drive” then you must do this first.***

***Using Windows Explorer, open Network Neighborhood, then open the Server...***

***You should see the servers C drive listed (and any other drive that has been set up as a Shared Drive).***

***Right click on the Server Drive (or Folder) you are to install PAM onto and choose “Map Network Drive”... Select a Drive Letter from the list.***

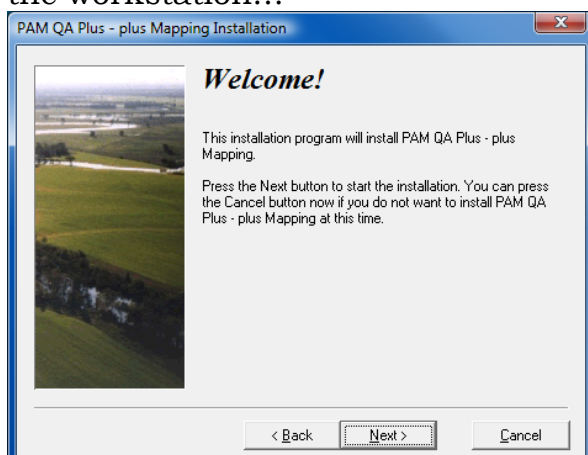
***It is a good idea to have a PAM folder on the server drive as a shared folder. We are using P: in the example.***

***Server C Drive has a PAM folder (C:\PAM)***

***If this folder is Shared and Mapped on each Workstation as P:***

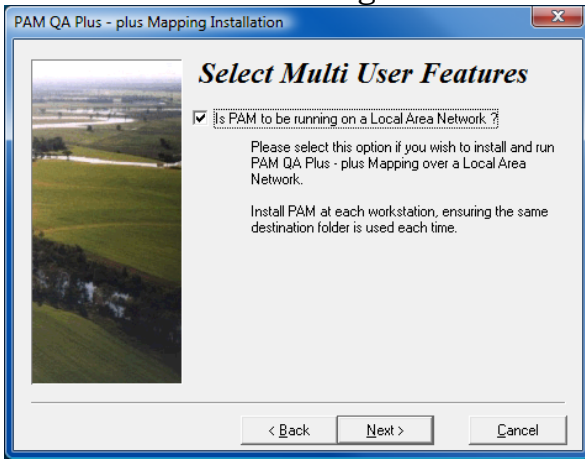
***When the workstation chooses P:\ to install to, it will install to the following on the servers disk C:\PAM***

Using the PAM CD or Setup file, commence installing the appropriate program on the workstation...

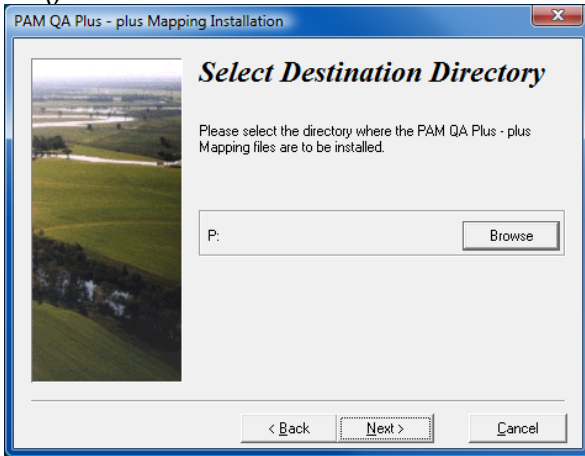


Be sure to tick the box that asks...

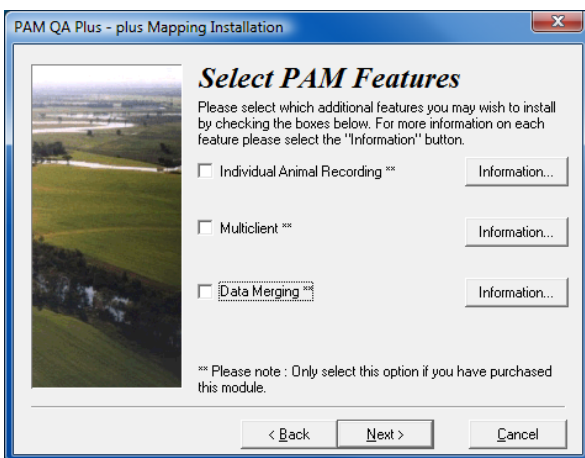
Is PAM to be running on a Local Area Network?



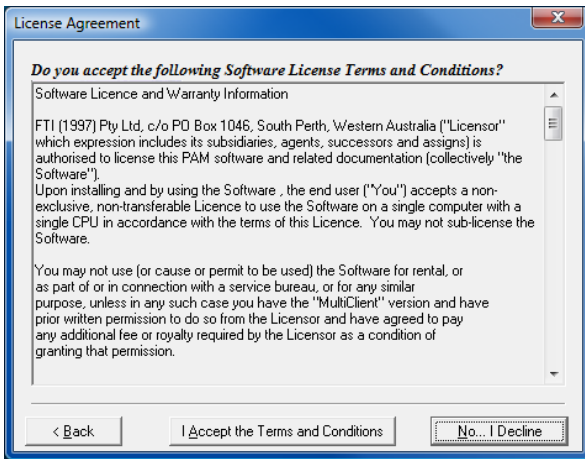
And choose the Drive Letter on the Server as your Destination Drive and point to the Folder that you have already created during the Server Installation Process. eg. P:\ (this will install to the Servers C:\PAM folder that has been mapped as P:\)



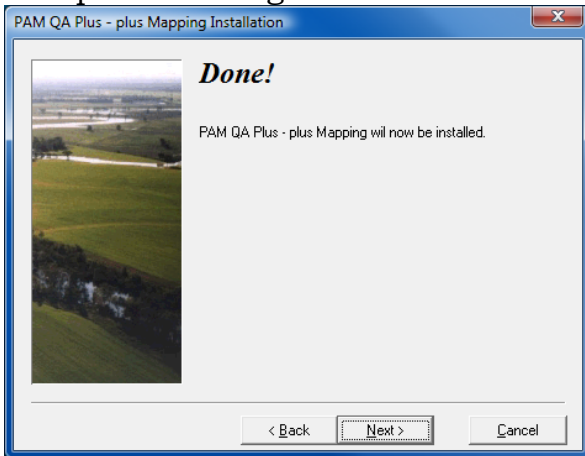
**Please Note:** If you have already installed the program on the server (if the server is a workstation too), ensure your destination directory is the same one you chose when you did the server installation. Take care not to create more than one installation of PAM on your server's Hard Disk.



Select any additional modules purchased.



## Accept License Agreement



Click Next to install

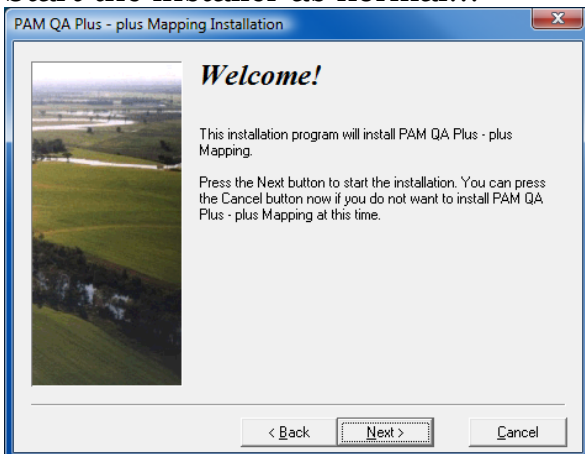
PAM automatically sets up a Folder for the Temporary Work files on the workstation drive.

Please note: you will need a customer serial number for each user's station to run the networked version of PAM.

## INSTALL PAM ON THE NETWORK SERVER

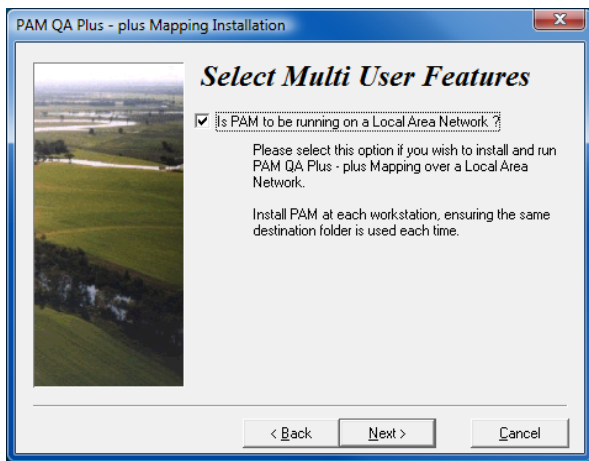
**(You should not have to install on the Server if the Server is not used as a workstation)**

Start the installer as normal...



Be sure to tick the box that asks...

Is PAM to be running on a Local Area Network?



If we assume that the Server Hard Disk you install on is the Server's Drive C: then select Drive C: and use the default folder name "PAM".

**Please Note:** ensure your destination directory is the same one you chose when you did the workstation installation. Take care not to create more than one installation of PAM on your server's Hard Disk.

Server C Drive has a PAM folder (C:\PAM)

If this folder is Shared and mapped on each Workstation as P:

If the workstation chooses P:\PAM to install to it will create the following on the servers disk C:\PAM\PAM and you will end up with two copies of the software and data.

**IMPORTANT:**

All users need to be either Administrators or have Read/Write permission to the Installation Folder & the Windows registry keys -

HKEY\_LOCAL\_MACHINE\SOFTWARE\Fairport

HKEY\_LOCAL\_MACHINE\SOFTWARE\Opus

Or

HKEY\_LOCAL\_MACHINE\SOFTWARE\Wow6432Node\Fairport

HKEY\_LOCAL\_MACHINE\SOFTWARE\Wow6432Node\Opus

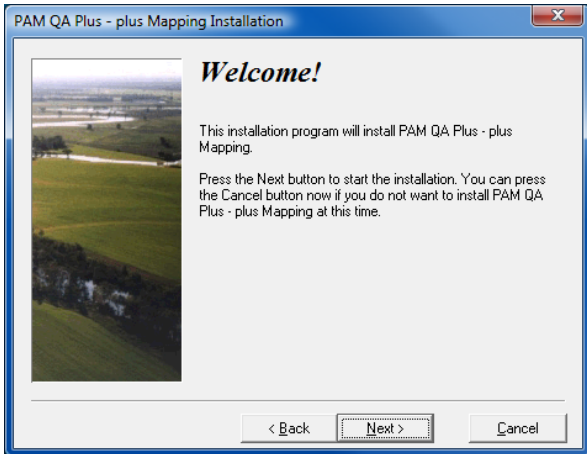
# WAN Installation

## **YOU WILL NEED TO INSTALL PAM FROM ALL USER LOGINS**

Connect to the Windows 2003 server using **Remote Desktop** and the required **User Login**.

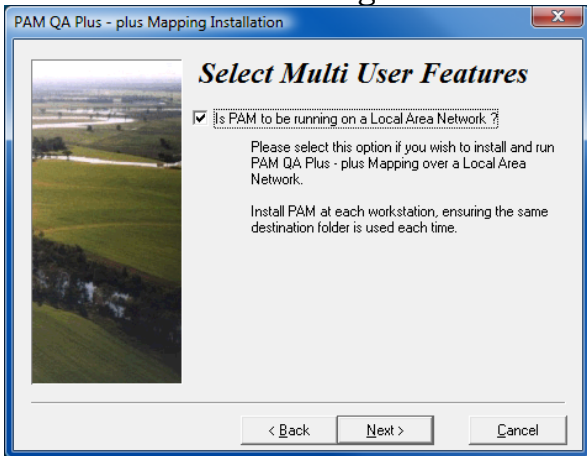
**NOTE:** During Installation the User Login will need Read/Write permissions to the Windows registry and be able to create folders etc on the installation drive.

Using the PAM CD or Setup file, commence installing the appropriate program on the Server.

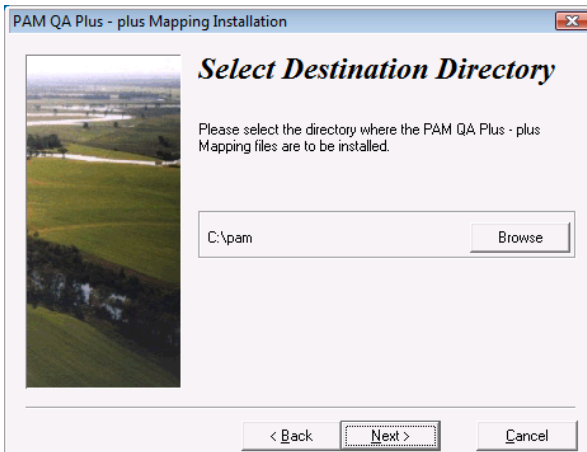


Be sure to tick the box that asks...

Is PAM to be running on a Local Area Network?

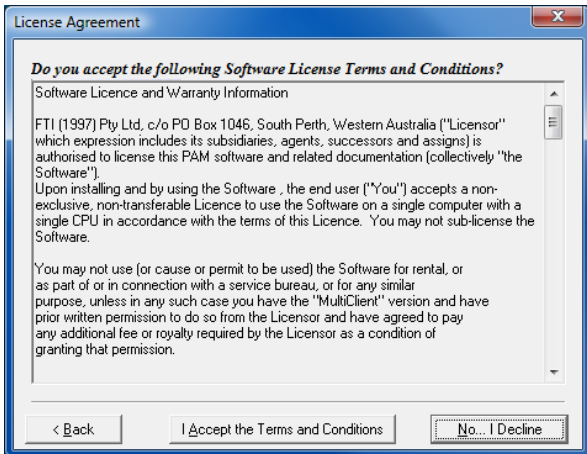


If we assume that the Server Hard Disk you install on is the Server's Drive C: then select Drive C: and use the default folder name "PAM".

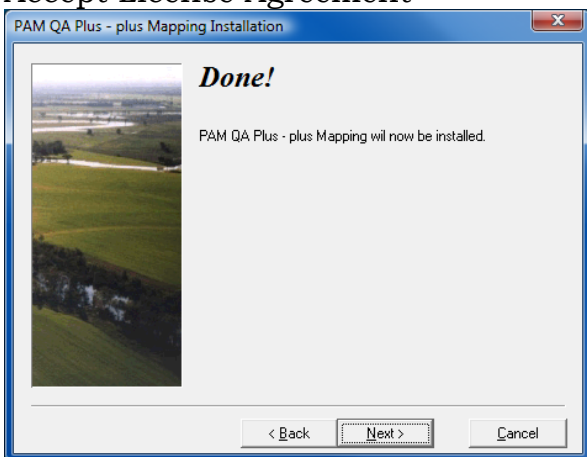




Select any additional modules purchased.



Accept License Agreement



Click Next to install

PAM automatically sets up a Folder for the Temporary Work files on the Servers drive.

Please note: you will need a customer serial number for each user's login to run the networked version of PAM.

Repeat this process for **ALL** User Login's that require access to the PAM Program.

**IMPORTANT:**

All users need to be either Administrators or have Read/Write permission to the Installation Folder & the Windows registry keys -  
 HKEY\_LOCAL\_MACHINE\SOFTWARE\Fairport  
 HKEY\_LOCAL\_MACHINE\SOFTWARE\Opus