

Installation Notes

PAM Central Installation Switch Command

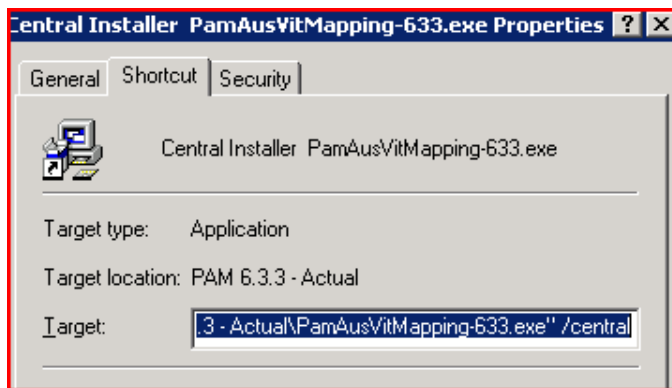
To get PAM to install the Central version it needs to be installed with a /Central switch.

The Fairport CD is set up for this when you choose to install a PAM Central version.

If you are running the installation from a downloaded setup file, you will need to manually run the file with a /Central switch.

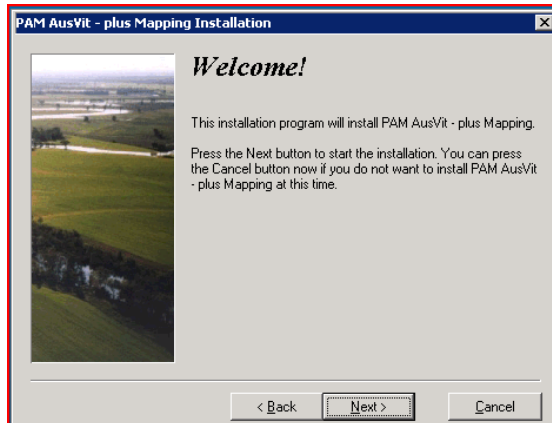
E.g. If the file downloaded is PAM633.exe you need to run it as PAM633 /Central

You may need to create a shortcut and modify it

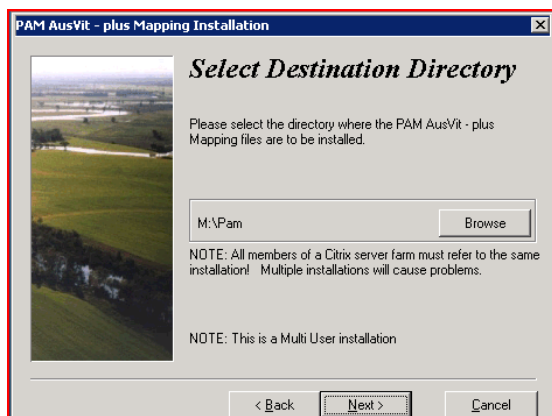


or run from a Command Prompt (Start, Run, CMD).

Step By Step Instructions

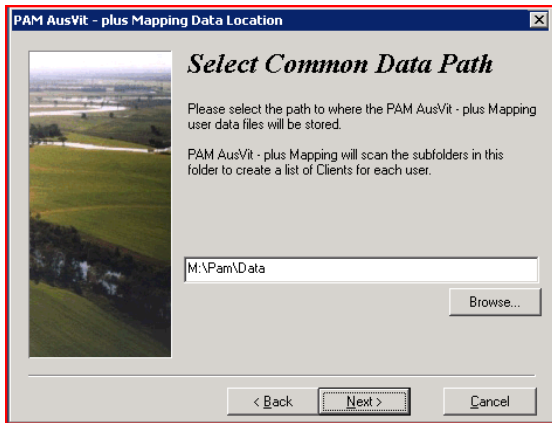


Click Next

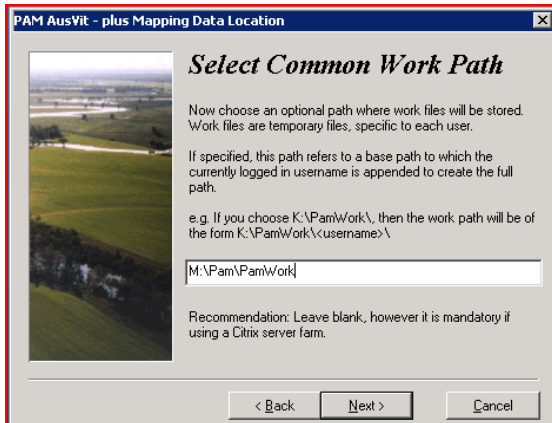


Select the destination folder to install to on the server.

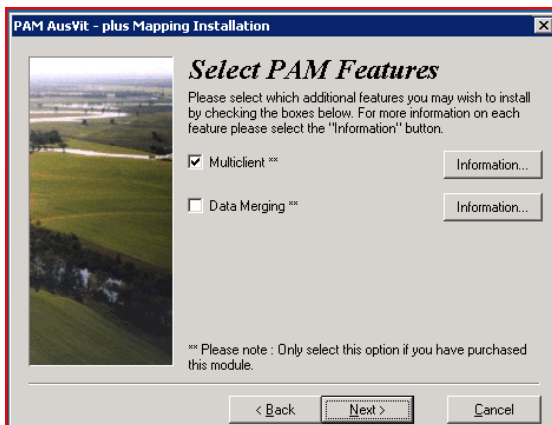
NOTE: the default setting is \Pam on the shared drive.



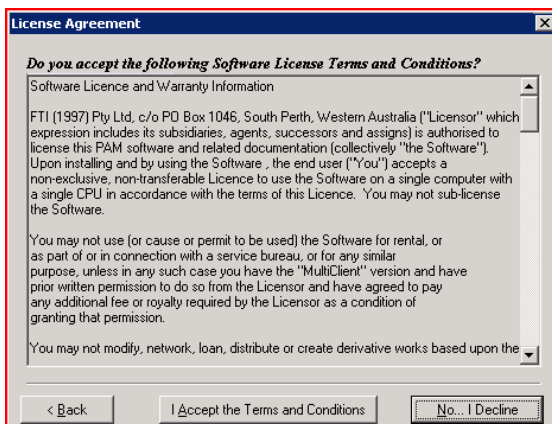
Enter the Data location on the server



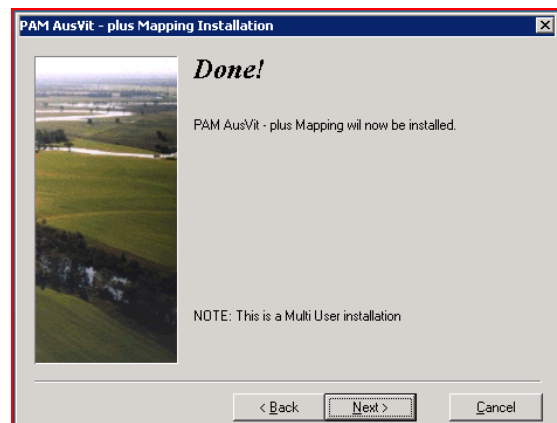
Enter the Temporary work file location
This MUST be entered



Select any additional Modules that you have purchased.
NOTE: Multiclient by default

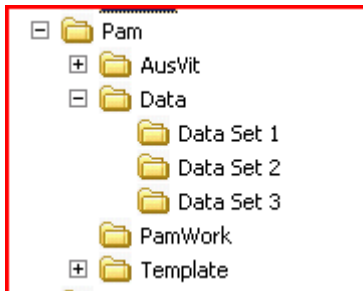


Accept the License Agreement
Then click NEXT to install



Kickstarting the System

- Create a sub folder under \PAM\Data for each data set required EG Client1
- Copy the files in the \PAM\Template folder to the new client folder.
- **DO NOT COPY THE DATA FROM ONE DATASET TO ANOTHER ALWAYS USE THE TEMPLATES**



Dataset Permissions

- The PAM Central system is designed to work tightly with NT Groups and NTFS folder permissions to control data access.
- For example, you could have 3 NT Groups:
 - “PAM Central 1”. “PAM Central 2”, “PAM Central 3”
- Then, edit the folder permissions to only allow access via the relevant groups.
 - e.g. The \PAM\Data \Client 1 folder would only be read/writeable by members of the “PAM Central 1” group.
- Add your users to the relevant groups to enable access to the data.
- On startup, PAM scans the data directory (using the current login name) for folders it has permission to access.

IMPORTANT:

All users need to be either Administrators or have Read/Write permission to the Installation Folder & the Windows registry keys -

HKEY_LOCAL_MACHINE\SOFTWARE\Fairport

HKEY_LOCAL_MACHINE\SOFTWARE\Opus