

PAM QA Plus Data Merging facility

This document describes the menus and basic procedures for using the Data Merging facility.

Users may now share PAM data across multiple computers, with any modifications or amendments to the data being logged by PAM QA Plus. These changes can later be merged into and update a controlling "Master" dataset.

A "Master" dataset / User :







This dataset is the control for all data merging activities. It is the one PAM QA Plus dataset that the User has selected as being the source for all data. This dataset can be "logged out" multiple times to "Remote" users. Only a Master dataset can be logged out. A Master dataset can, if need be, "log in" (merge in) data changes and updates made by Remote users.

A "Remote" dataset / User :

This dataset has originally come from a Master dataset. It is a complete copy of the Master dataset at the time the Master was "logged out". Any modifications or amendments to the Remote dataset can be periodically sent to the Master to merge in its records.

THE DATA MERGING CYCLE – 6 SIMPLE STEPS

All computers concerned need to be configured to their respective Data Merging status prior to implementation (see page 2)

- 1: Master logs out data (creates the  PamLO_5537563.ZIP file) and carries out data entry
- 2: The Remote computer then logs' in the  PamLO_5537563.ZIP file and carries out data entry
- 3: The Remote then logs out (creates the  PamEx_0156865.ZIP file) and stops data entry
- 4: The Master then logs in the Remote ( PamEx_0156865.ZIP), this is where the data merging takes place.
- 5: The Master then logs out the updated dataset (creates the  PamLO_5537563.ZIP file)
- 6: The Remote computer then logs' in the  PamLO_5537563.ZIP file and continues data entry

Configuring your PAM QA Plus for use with Data Merging

To configure your PAM QA Plus for use with the Data Merging system you simply select the "Customise your PAM QA Plus program" menu option from the "Configuration" menu and on the "Settings (1)" tab turn on the "Include facilities for Logging Out and Logging In Datasets and Merging Configuration Lists." option. The Data Merging facility may be enabled or disabled via this program settings screen (Figure 1)

Configuration Menu : "Customise your PAM QA Plus program"

Figure 1

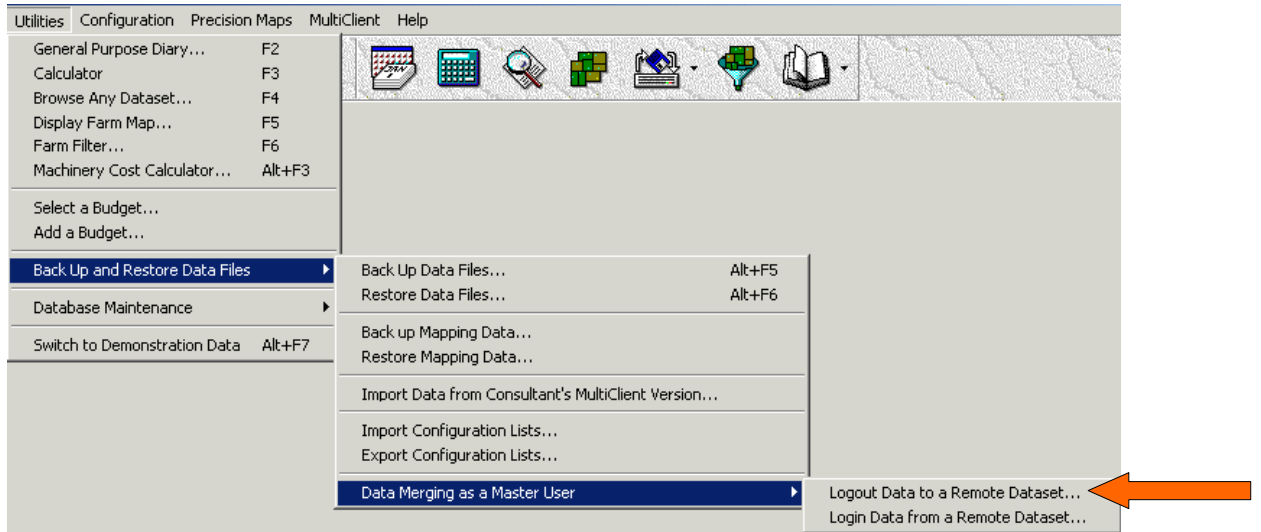
The screenshot shows the 'Program Settings' dialog box with the following elements:

- Tabbed interface: Settings (1) | Settings (2) | Cropping | Livestock | Units | Packages | Harvest Units
- Language: Select Program Language : English
- Feature: **Include Livestock features in my PAM 2000+**
- Production unit name: Paddock
- Production centre name: Farm
- Feature: **Include facilities for Logging Out & Logging In Datasets and Merging Configuration Lists.** (highlighted by an orange arrow)
- User type: I use the Data Merging facility as this type of User...
 - I am a Master Only
 - I am a Remote User Only
 - I am both Master and Remote User
- Feature: Enable Automatic Email facility for Logging In and Out datasets.
- Comparative Analysis: PAM uses "Comparitive Analysis Codes" in the MultiClient version to compare results from different Farm. Are you a member of a farm consultant's group or participate in a comparative analysis program? Yes
- Startup screen: When PAM starts, it can be configured to display a specific screen. Select which screen you want to see when PAM is started. None
- Buttons: OK, Cancel

Turning on the Data Merging facility will activate new menu options depending on the options selected. The following diagrams show these menus.

PAMQA Plus Data Merging as a Master User Only

Figure 2 : Master User menu options



As a Master User, the User has 2 new menus activated, which allow them to "Logout" data to a Remote User or "Login" data from a Remote User.

Logging Out a dataset :

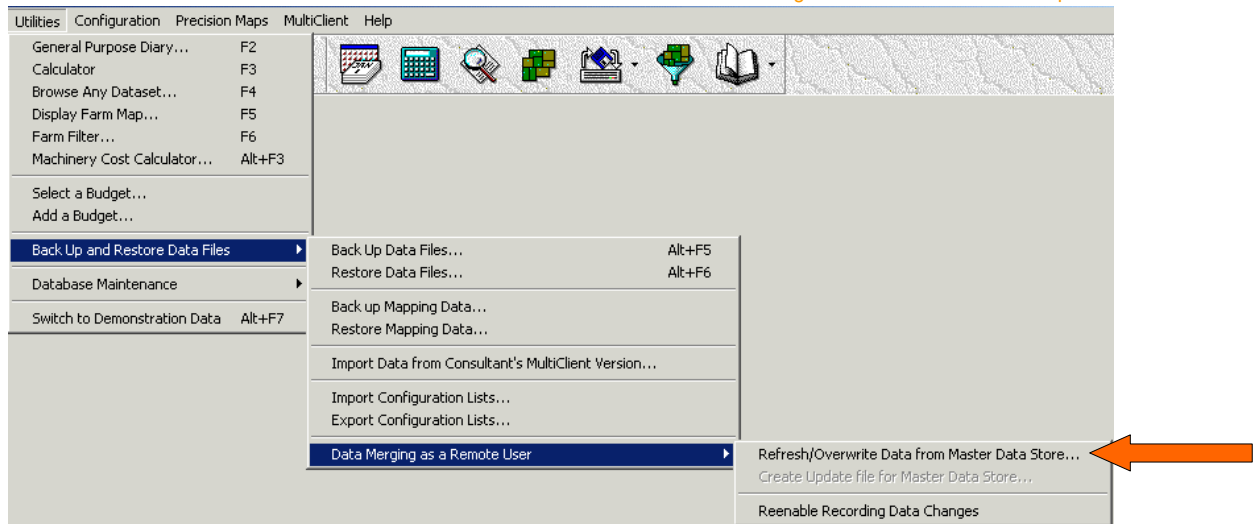
- Selecting the "Logout Data to a Remote Dataset..." option will create a full copy of the your Master dataset. This can then be sent to a Remote User. You may specify where the Logout file is to be stored, the default is the C:\Pam\Logout\ folder.

Logging In a dataset :

- Selecting "Login Data from a Remote Dataset..." option will import an update file sent from a Remote User. This file contains the changes or amendments made on the Remote Users machine. You will be prompted to specify the folder that contains the Login file, and only files which have originally been created from the Master dataset will be listed for logging in.

PAM QA Plus Data Merging as a Remote User Only

Figure 3 : Remote User menu options



As a Remote User, the User has 2 new menus activated, which allow them to "Refresh" their data from a Master dataset and to create an "Update file" to be sent back to the Master.

Refreshing data from a Master :

- Selecting the "Refresh/Overwrite Data from Master data Store..." will entirely replace the dataset that is currently selected, with data from a Master dataset. The User may then begin modifying or adding records.

Creating an Update file for a Master :

- Selecting the "Create Update file for Master Data Store..." will create generate an Update file which contains just the additions and modifications the Remote User has entered. This file can then be sent to a Master User for merging into. The Remote User can generate these update files periodically when needed.

Reenable recording Changes :

- When the "Create update for master data store" operation is carried out, a dialogue box will appear giving you the option to "Do not keep recording changes to this data" if this box is checked any additional changes to the remote users dataset will not be included in any subsequent updates for the master data store. At this point, the option "Reenable recording changes" option will become available in the 'Data Merging as a Remote User' menu (Figure 3). Selecting this option will reset the remote users dataset so that added operations will again be included in the logged out dataset. Logging in the master users dataset will reenable the remote users activity recording automatically.

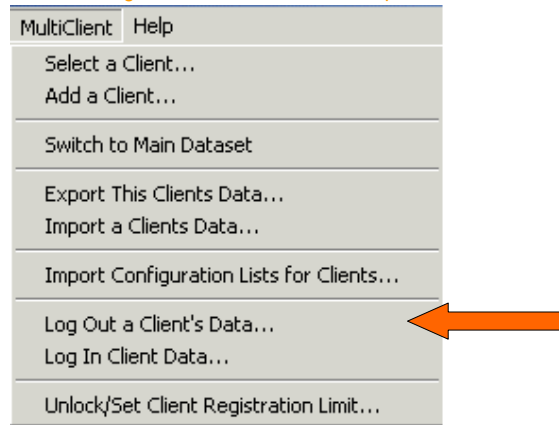
PAM QA Plus Data Merging as both a Master and Remote user

In this mode all of the Data Merging menu options are shown to the user. This configuration is selected when the User requires data from another Master User (ie as a Remote User) and to be able to send their data to another Remoter User (ie as a Master User). All of the options mentioned for Master and Remote users are available.

PAM QA Plus MultiClient Users Only : Data Merging menu options (Master Users Only)

For User of the MultiClient and MultiClient Pro versions of PAM QA Plus the Data Merging facility includes 2 extra menu options. These options only appear if the User is configured as a "Master and Remote User" or as a "Master User Only".

Figure 4 : Master User menu options



These menu options behave exactly the same as from the Utilities / Backup and Restore data files / Data Merging as a Master User menu. "Log Out a Client's Data..." will enable the Master User to send their data to a Remote User, and "Log In Client Data..." allows the Master to merge in changes into the Client dataset.

Additional Information:

Automatic Email facility :

The Automatic Email facility is used in Data Merging if the User requires sending their data to and from other Users via Email. This option is found under the Data Merging configuration options in Configuration / Customise your PAM QA Plus Settings 1 tab.

Your email settings (eg Email Server and UserName) should then be configured via the Configuration / Email Connection Settings... menu option.

*Please Note :

If the Automatic Email facility is enabled, then the Log In/ Log Out functions will attempt to send/receive email messages containing the relevant data.

These email files (PAMLO_ files and PAMEx_ files) will be saved into the Users "Attachments Path" folder specified in the "Email Connections Settings" configuration. The Data Merging functions allow the User to specify a folder if they need to change it.

Data Format and Storage :

The Data Merging facility uses the XML (eXtensible Markup Language) format for both Master and Remote datasets. XML files are then internally compressed into zip compatible files. This produces a relatively small file for transmission.

.zip files for Master dataset logout files are prefixed "PAMLO_ "
.zip files for Remote dataset update files are prefixed "PAMEx_ '

Master files are by default stored in a "Logout" sub folder of the installed folder
eg: C:\PAM\Logout

Remote files are by default stored in a "Login" sub folder of the installed folder
eg: C:\PAM>Login