
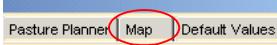
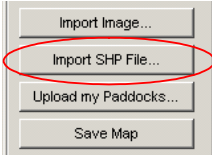


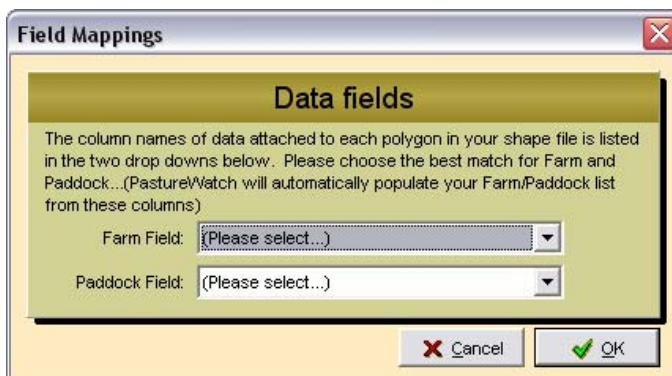
Quick Reference Guide #2c: Setting up PastureWatch by Importing Shape Files

You may have organized for a company to generate your farm maps already, by drawing on your paddock boundaries, and entering the paddock information. If this is the case, you need to follow the steps below to set up PastureWatch. If you haven't, but you do have a high quality aerial photo/satellite image of your farm on disk, see Quick Reference Guide #2a. Otherwise, see Quick Reference Guide #2b.

To import a Shape file to PastureWatch closely follow these few steps.

1. Open PastureWatch by clicking on the  icon on the desktop
2. Click on the **Map** tab  and then click on the **Import SHP File...** button located in the margin on the left side of your screen. This will bring up a browser window. 
3. Open the shape file: In the browser window that opens up, go to the folder or storage device where you have saved your shape file then click on the file and click open.

Next you will see the “Field Mappings” window:



This window applies only to shape files that are intended to import your farm map to your “Map” tab as well as import your farm name, paddock names and also their areas to your “List” tab.

4. If you have a shape file that just has your farm map in it, just click on the **OK** button to continue. You will need to enter in your paddock details and link these to the paddock boundaries on the farm map. See the “Quick Reference Guide #3: Setting up PastureWatch by Drawing Your Farm Map” for details on how to do this. If you have farm, paddock and area information in your shape file then you will need to follow step 5.

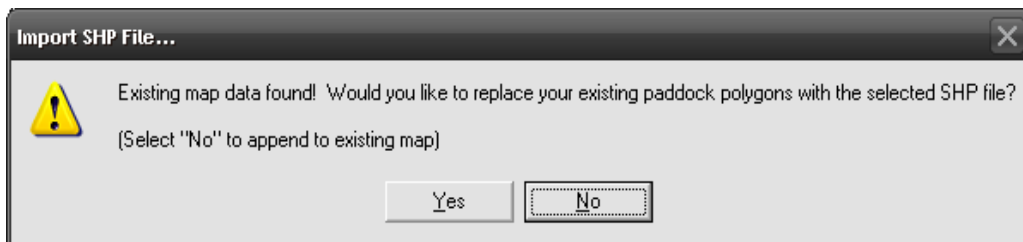
5. Select your Farm and Paddock data fields:

Firstly, it is quite important to get this part right, so if you are unsure of what to do, contact the person or company that supplied your shape file, explain what it is you are doing and ask them what field they put your farm name in and what field they put your paddock names in.

Clicking on the down facing arrow at the right of each drop down list will display a list of data fields to select from.

- Once you know which fields to match up, click on the **Farm Field** drop down list and select the correct option from the list. Repeat the same for the Paddock Field and then click **OK** to proceed.

You will then see a pop up window asking you to choose whether or not you want to add to your existing map or overwrite your existing map.



6. Append or Overwrite existing maps. Click **No** if you wish to keep your existing mapping data and click **Yes** if you want to overwrite any existing maps with this shape file and start fresh.

7. Click **Yes** to proceed and click **No** to cancel the import.

8. Click on the **Upload my Paddocks...** button .

9. Upon receipt of a faxed invoice from Fairport, pay your subscription fee.

10. You can now begin downloading the Pastures from Space data by clicking on the **Download "Pastures from Space" Data**  button