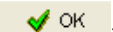
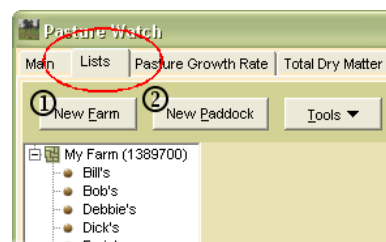


Quick Reference Guide #2b: Setting up PastureWatch by Drawing Your Farm Map

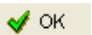
If you haven't organized for a company to generate your farm map with the paddock boundaries and information included, you will need to prepare this yourself. (If you have, see Quick Reference Guide #2c). If you don't already have a high quality aerial photo/satellite image of your farm on disk, follow the steps below to prepare your farm map. If you do, however, have a high quality aerial photo/satellite image of your farm on disk, then see Quick Reference Guide #2a.

1. If you don't have PAM, enter your farms into PastureWatch:

- a. Click on the **Lists** tab near the top of the PastureWatch screen.
- b. Click on the **New Farm** button (see ① in the figure to the right) to display the **Add New Farm Name** dialog box.
- c. Enter the farm name and click on **OK**  **OK**.
- d. Repeat b. and c. until all farms have been entered.





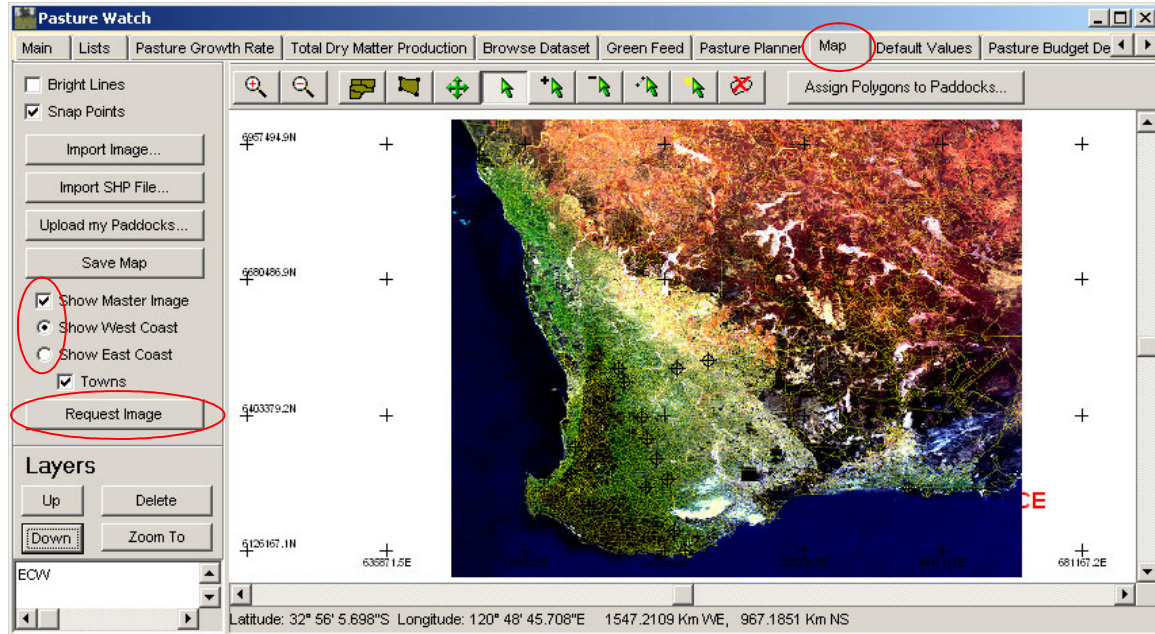
2. Now enter the paddocks:

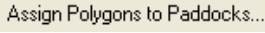
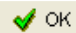
- a. Select/highlight the farm you want to add paddocks to.
- b. Click on the **New Paddock** button (see ② in the figure above) to display the **Add a Paddock** dialog box.
- c. In the **Add a Paddock** dialog box, select the farm and type in the name of the paddock. Type in the area of the paddock. This doesn't have to be accurate as this will be calculated automatically later.
- d. If your paddock was in crop this year or last year, tick the relevant boxes. The rest of the fields can be left for now.
- e. Click on **OK**  **OK** to save the paddock information.
- f. Repeat these steps for each paddock until all the paddocks for all of the farms have been entered.

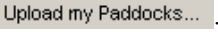
3. Draw your paddock boundaries on your farm image by following these steps (refer to the diagram over the page):

- a. Click on the **Map** tab at the top right of the PastureWatch window and then click in the **Show Master Image** check box. Choose either Show West Coast or Show East Coast, depending on which part of Australia your farm is in.
- b. Locate roughly where your farm is and zoom into that region on the map by holding down the right mouse button at the top left corner and dragging a box around your farm to the bottom right corner. You may need to do this a few times, until you have zoomed in as close as possible.
- c. When you have zoomed into the farm as much as possible (so that the *entire* farm is visible), click on **Request Image**. This will show a higher resolution image of your farm (this may take a few minutes).


- d. Zoom in to the paddock you want to draw first and click the **New Paddock**  button.
- e. Click on one corner of the paddock with the left mouse button, then the next corner and so on until every corner has been clicked on.
- f. Click the right mouse button to finish drawing the paddock.
- g. To draw in another paddock, zoom back out to the farm (click on  to zoom out) and repeat steps d – f.



4. When all the paddock boundaries have been drawn, link the paddock boundaries on your farm map to the paddock names in your paddock list:
 - a. Click on the **Assign Polygons to Paddocks...**  button to link the polygons to their paddock names.
 - b. For each paddock, left click on a paddock polygon, choose the paddock name from the list that appears and click on **OK** .
 - c. As you follow these steps you will see each paddock polygon light up yellow (until you click on the next one). You have finished when there are no more paddocks to assign.

5. Click on the **Upload my Paddocks...** button .

6. Upon receipt of a faxed invoice from Fairport, pay your subscription fee.

7. You can now begin downloading Pastures from Space data by clicking on the **Download "Pastures from Space" Data**  button.