

# PastureWatch™

---

## Installation of Pasture Watch

### Downloading from the Fairport website:

1. Go to [www.fairport.com.au](http://www.fairport.com.au)

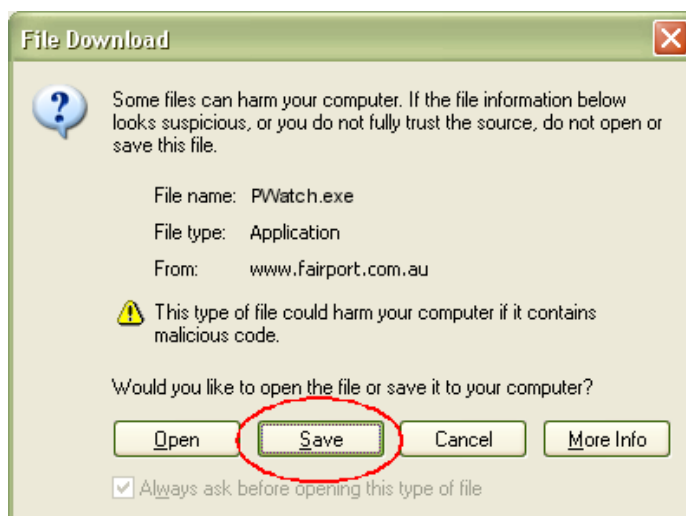


2. From the menu Choose *Products / Pasture Watch*
3. Click on one of the Download links

[Download Pasture Watch for PAM Users](#)

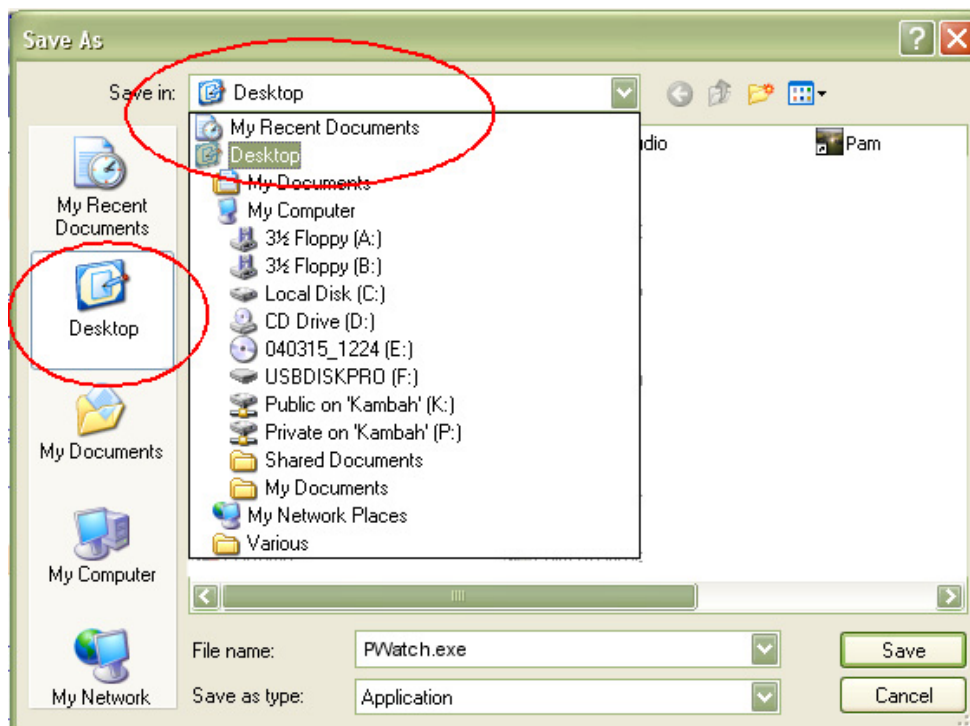
[Download Pasture Watch for people without Fairport's PAM software](#)

(there are 2 ... one for those who have PAM QA Plus and one for those who don't).



4. Click on Save

- Now ... Choose a destination for the file (We recommend the Desktop of your computer)



- Commence downloading by clicking on **Save**
- When the downloading process is complete, locate the setup file icon on your desktop and double click it to run the installer.

**Please Note:**

*If you only have a demonstration version of PAM installed and you are not intending to purchase a PAM license ... choose to run PastureWatch as a separate system.*

- When done, a PastureWatch™ desktop icon will appear on your desktop.



- You could now delete the downloaded pwatch.exe (setup) file from your desktop. Click on the pwatch.exe (setup) file icon and then press the **DEL** key on your keyboard.



## Run PastureWatch

To run PastureWatch, double click the PastureWatch icon on your desktop.

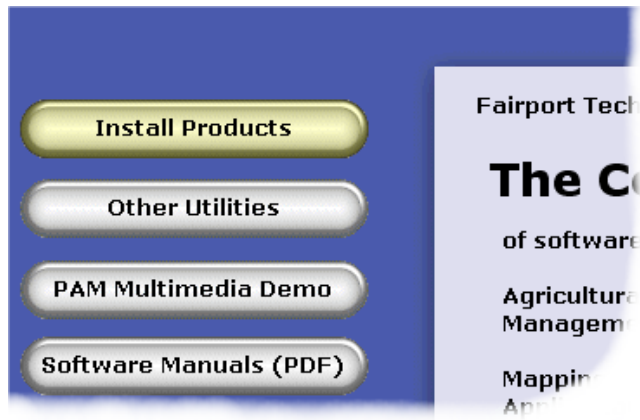


icon

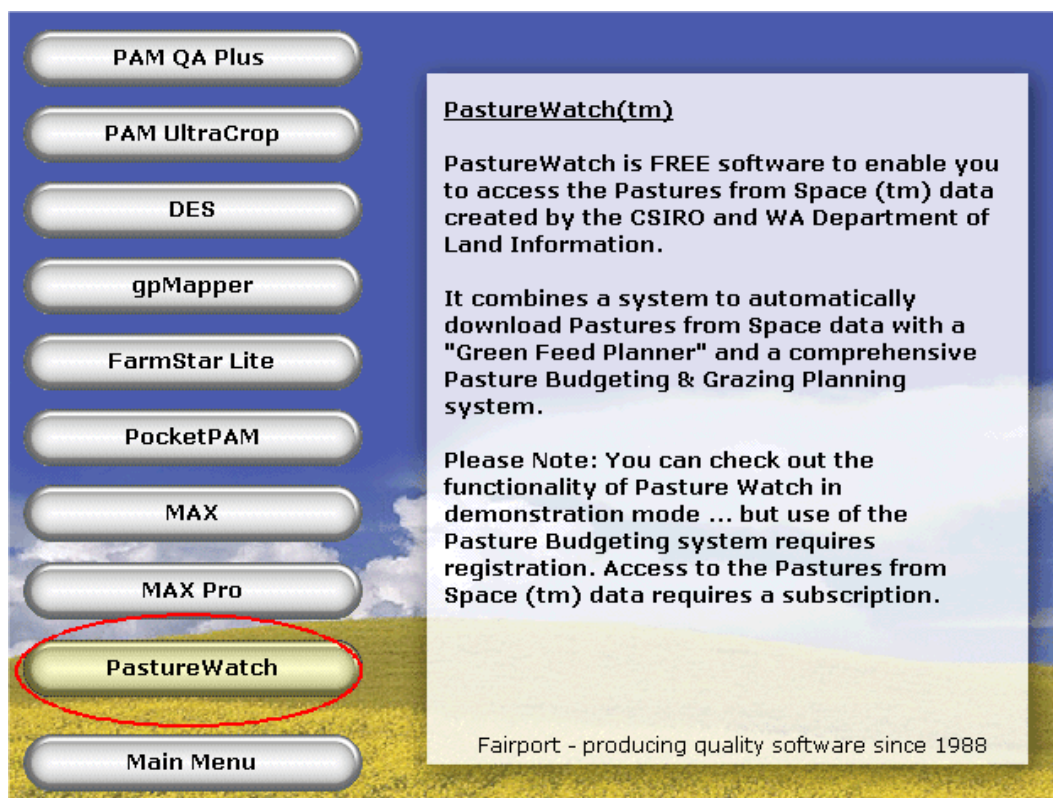
Or.. if you have PAM version 5.0.0 or later, you can run PastureWatch from the menu option *Utilities/Pasture Watch*.

## Installing from the Fairport CD

On the opening menu of the CD browser software ...



1. Click on Install Products To see the next menu



2. Click on the **PastureWatch** button to go to the PastureWatch page.



now choose one of these options...  
 Either you are running a registered PAM or PAM with Mapping program or not... Choose the appropriate button to install PastureWatch.

3. When the installer has finished, a PastureWatch desktop icon will appear on your desktop.



#### To Run PastureWatch

Double click the PastureWatch desktop icon.

Or... if you have PAM version 5.0.0 or later, you can run PastureWatch from the menu option *Utilities/Pasture Watch*.