

Fairport Technologies Technote - 3 November 2003

Product:

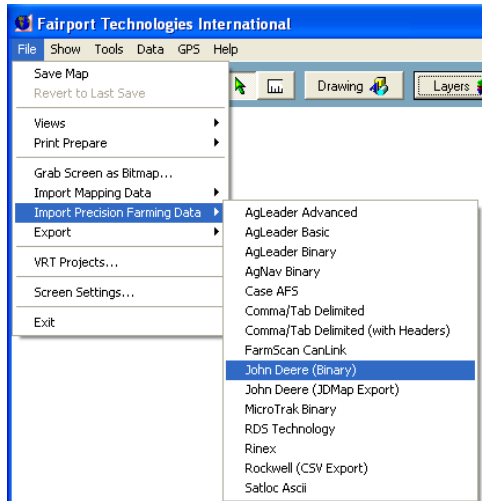
FarmStar, FarmStar Lite

Area:

GreenStar, John Deere Import

Using the John Deere direct import of GSY follows these steps:

Step 1: Select the “John Deere (Binary)” import option



Step 2: Import Components not installed.

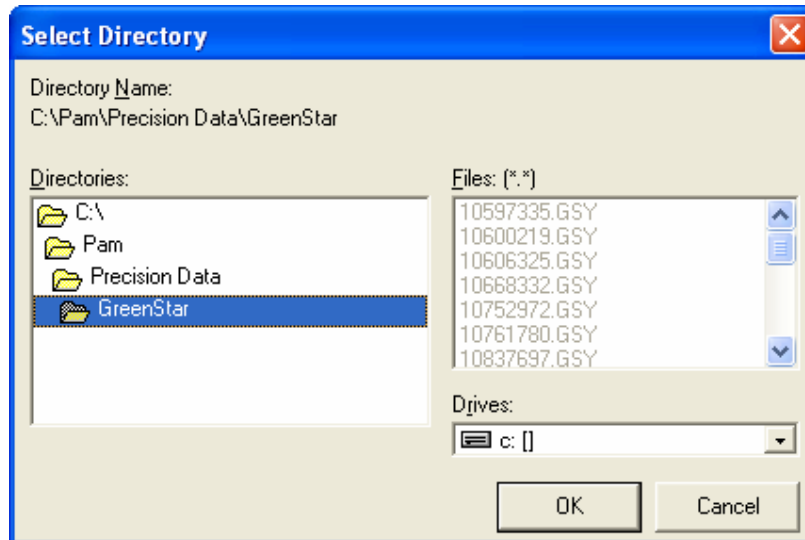
If this is the first run of the John Deere import, then the necessary components will not have been installed. Due to their size (6Mb), they are not included with standard installation / downloads. A dialog will ask for your CD, or give you the option of downloading from the internet if you have no CD.

You can manually install them from the \Other\ImportGSY.exe location on your CD, or visit <http://www.fairport.com.au/support/harvest> to download them.

Step 3: Importing your .GSY Files

The source of the .GSY files will usually be one of two locations – the data card, or an existing JDOOffice archive subdirectory.

Select the folder where your .GSY files are located:



If the .GSY files are found to be on a “removable device”, such as your PCMCIA card, then FarmStar will offer to copy them to the local hard drive for archival storage.

The .GSY files will be stored in a subdirectory such as

<program location>\Precision Data\<season>\<Farm>\<Pdk>\Harvest____.GSY

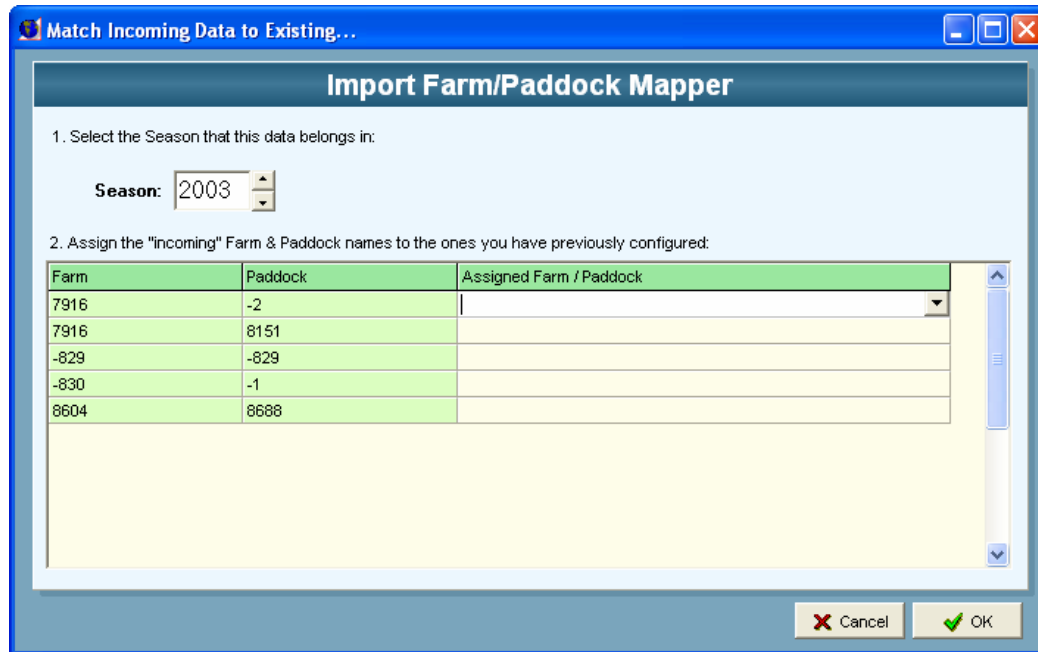
e.g.

c:\Pam\Precision Data\2003\Kambah\Rogers\Harvest\0239237.GSY

To improve the speed of subsequent imports, and to help manage the data better, FarmStar will re-write incoming .GSY files as .CSV (comma separated values) files, stored in same file structure as above.

Step 4: **Assigning your Paddocks to incoming data**

The Farm & Field identifiers found in the .GSY files probably won't match your Farms & Paddocks you've configured in your program. A dialog like this is displayed to enable you to match the incoming Farm/Paddocks to the names you have defined.



The dialog box is titled "Match Incoming Data to Existing..." and contains the following elements:

- Section 1:** "Select the Season that this data belongs in:" with a "Season:" dropdown menu set to "2003".
- Section 2:** "Assign the 'incoming' Farm & Paddock names to the ones you have previously configured:"

Farm	Paddock	Assigned Farm / Paddock
7916	-2	
7916	8151	
-829	-829	
-830	-1	
8604	8688	

At the bottom right, there are "Cancel" and "OK" buttons.

Just choose your Farm/Paddock from the drop down selector for each incoming value. If you do not choose a match, then the data is not imported.

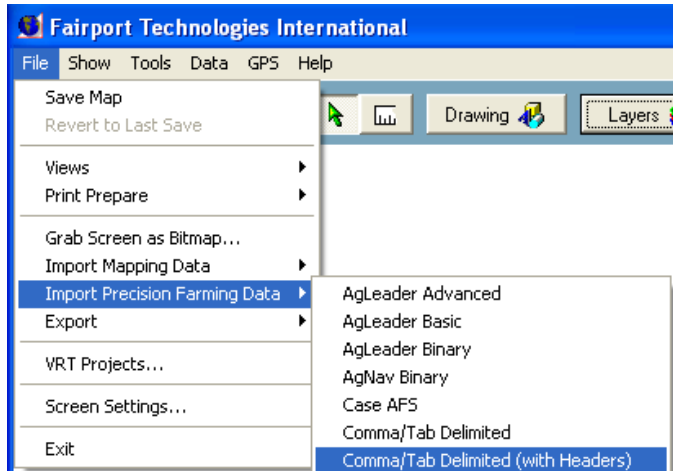
Step 5: **Import the data**

Click the OK button – the Import should be fully automated from this point on. Once the import is complete, your Data Manager Dialog will be full of the datasets that were found in your .GSY files.

Troubleshooting

Q: I've deleted the import from the data manager! How do I get it back?

A: Use this option:



and locate the files in

*<program location>\Precision
Data\<season>\<Farm>\<Pdk>\Harvest____.CSV*

e.g.

c:\Pam\Precision Data\2003\Kambah\Rogers\Harvest\R-K-03-Harvest.CSV

Q: Can I add store all my .GSY files in a folder an expect FarmStar to know which ones it has already imported.

A: Yes!

Q: How can I force FarmStar to re-process a file?

A: Use Explorer to locate the .CSV file and delete it. (Make sure you *a/so* delete it from the "Data Manager" in FarmStar)